

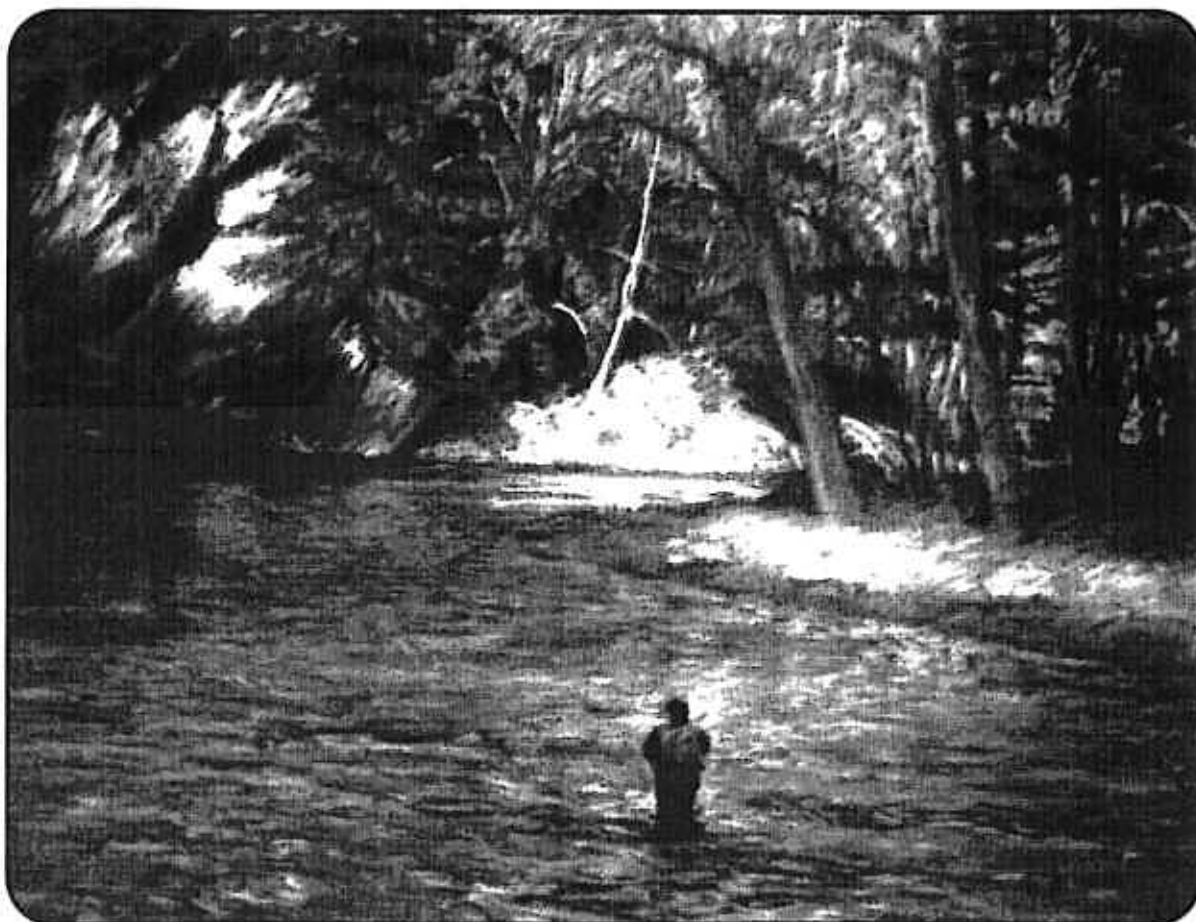


# FLY FISHING GUIDE

SERVING PA • NY • MD • NJ • DE • VA • CT

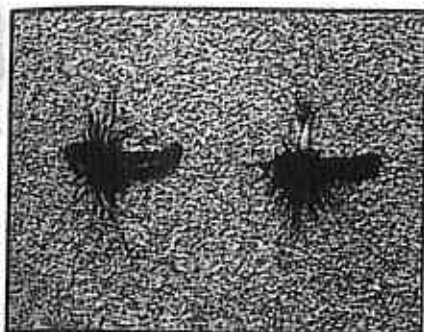
FREE

AUGUST – 2001



- CHARLES R. MECK...  
Small Nymph – Big Trout
- BOB CLOUSER...  
Long Casts for Smallmouth
- LEFTY KREH...  
Handling Fish
- SUBSURFACE PANFISH

- ED SHENK...  
The Art of Diminution
- A. K. BEST...  
Soft-Hackle Flies
- JOE BRUCE...  
Saltwater Panfish
- TRICO PATTERNS



Jerry Storch

## AL'S TRICO

by Rod Rohrbach

One of the Little Lehigh's treasures is Al Miller of Allentown, Pennsylvania. Al fishes the Little Lehigh about fifty-five hours a week, fifty-two weeks a year. He's been doing so for thirty-five years and been a vigilant observer of the stream insects and their imitations. His observations sometimes result in patterns which outfish traditional patterns. One such pattern is Al's Trico.

Most of the consistently successful patterns on the Little Lehigh have two things in common: they are easy to tie and look the same from all angles. Al's imitation of *Tricorythodes stygiatus* meets these criteria.

Imitative patterns have a triggering device which induces the "take." For some organisms it's the silhouette, for others it's the color, behavior, or size. It's important to capture the "triggering device" and once captured, not to hide it or make a mistake. For *Trico* duns and spinners, it's the silhouette of the thorax and abdomen.

Al starts at the eye of a size 24 Mustad #94840 hook and winds 12/0 thread (black for males, white for females) to the bend. He ties in a #22 grizzly hackle. A black thorax is dubbed and tied in over the spear of the hook. Two or three turns of grizzly are wrapped over the thorax and tied off. Winding the thread to the eye and whip finishing it completes the fly.

Between July and October, male *Trico* duns emerge through the night; females in the early morning. They mate almost immediately. Swarms of spinners hover above the water (particularly over canopied riffles) peaking at mid morning, falling spent by late morning.

During the first weeks of the hatch the trout are easy to catch as they gorge themselves with reckless abandon. As the season progresses they become very selective, rising to the silhouette then refusing the fly as they see over-sized wings or other mistakes.

Al's pattern eliminates this problem. Selectively feeding trout are looking for what's right, not what's wrong. Since Al's Trico has no wings or tail to turn them off, they rise to the silhouette and take the fly. The pattern works for duns and spinners. Enjoy your *Trico* fishing. A fine tippet, good presentation, and Al's Trico will result in fewer refusals.



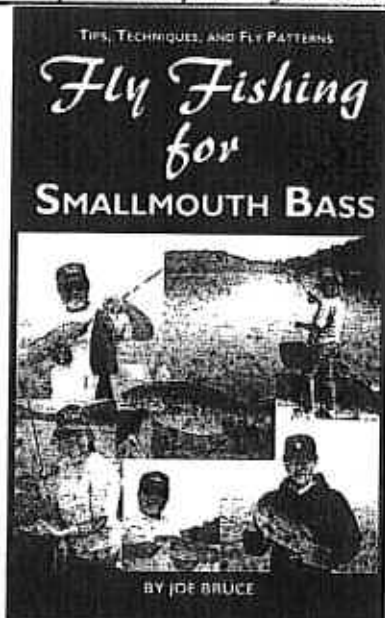
**Rod Rohrbach** owns and operates Little Lehigh Fly Shop on the banks of that stream. He is available to give slide shows of the great fishing there. Contact Rod at 610/797-5599.



Maurice Melker

## FLY FISHING FOR SMALLMOUTH BASS

• Tips • Techniques • Fly Patterns



A 95 Page Mini-Book by  
**Joe Bruce**

(\$11.95 + \$2.50 S&H)

**The Fisherman's Edge**  
(410) 719-7999 • (800) 338-0053



**FlyLine Tamer™**  
GIVES YOU THE ULTIMATE  
LINE CONTROL

No more tangles, foot wraps, cleat grabs, line blowing overboard, or being caught on weeds, etc.

FISH ALL DAY...NEVER  
PUT YOUR ROD AWAY!



Call today:  
1-800-421-2586  
www.alumarine.com

*The Stalker™*

A comfortable, natural stripping-motion device for fly fishing. Line does not tangle, drag, or pick up matter from the water. Clips to belt or pocket.



A PROTRIM PRODUCT BY GALT-MARINE CORPORATION 1999 ISLANDORADA, FLORIDA PATENTS ISSUED & OTHERS PENDING